



Chelveston-cum-Caldecott
Parish Council

Village Appraisal

Results Detail 2010

Village Appraisal Supported by



grassroots
grants

Managed by the Community Development Foundation
Funded by the Office of the Third Sector

Co-Ordinators

Cllr Adrian Dale
21 Water Lane
Chelveston
Wellingborough
Northants
NN9 6AP
(01933) 622624

adrian.dale@creatifica.com

Mark Hunter
Ashbury
Caldecott
Wellingborough
Northants
NN9 6AR
(01933) 626039

clerk@chelveston.org.uk

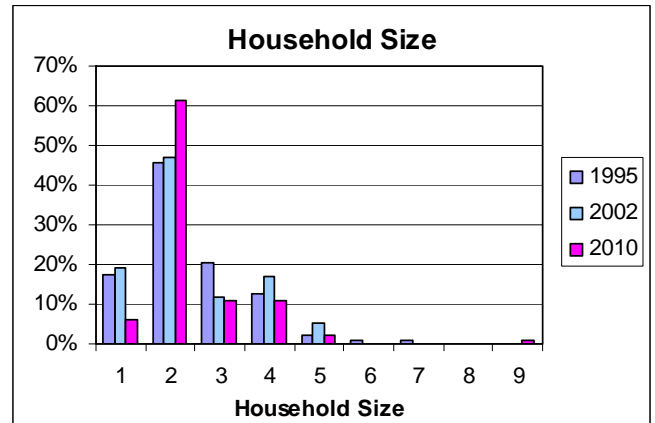
CHELVESTON-CUM-CALDECOTT 2010 VILLAGE APPRAISAL RESULTS DETAIL

PART 1 HOUSEHOLD

	2010		2002		1995	
Number of returned appraisals	101	62%	119	75%	127	83%

Number of people including children normally living in the household?

People	1	2	3	4	5
2010	14	62	11	11	2
	6%	61%	11%	11%	2%
2002	23	56	14	20	6
	19%	47%	12%	17%	5%
1995	22	58	26	16	3
	17%	46%	20%	13%	2%



Number of people in your household in each age group

2010 Appraisal

Age	0-4	5-10	11-16	17-21	22-39	40-59	60-64	65-74	75+	Total
Male	0	0	9	7	10	48	15	20	6	115
Female	1	4	9	8	14	41	18	17	7	119

2002 Appraisal

Age	0-4	5-10	11-16	17-21	22-39	40-59	60-64	65-74	75+	Total
Male	8	16	5	4	27	58	6	13	11	146
Female	8	12	9	6	26	56	4	11	7	136

1995 Appraisal

Age	0-4	5-10	11-16	17-21	22-39	40-59	60-64	65-74	75+	Total
Male	9	7	6	9	23	65	12	12	10	153
Female	8	7	14	11	31	60	7	13	6	157

HOUSING

B1 How long has your household lived at this address?

- 1) Less than a year
- 2) 1 - 5 years
- 3) 6 -15 years
- 4) 16 -25 years
- 5) 26 -50 years
- 6) 51+ years

2010		2002		1995	
3	3%	13	11%	5	4%
20	20%	26	22%	24	19%
32	32%	28	24%	61	48%
20	20%	32	27%	21	17%
25	25%	15	13%	12	9%
0	0%	5	4%	4	3%

B2 What type of dwelling is this?

- 1) House
- 2) Bungalow
- 3) Flat / Maisonette
- 4) Bedsit
- 5) Mobile Home
- 6) Other (please state)

2010		2002		1995	
87	87%	104	87%	106	83%
12	12%	9	8%	16	13%
0	0%	4	3%	3	2%
0	0%	0	0%	0	0%
0	0%	0	0%	0	0%
1	1%	2	2%	2	2%

B3 How many bedrooms does your dwelling have?

- 1) 1
- 2) 2
- 3) 3
- 4) 4
- 5) 5
- 6) 6

2010		2002		1995	
3	3%	3	3%	4	3%
15	15%	29	24%	26	20%
35	35%	45	38%	54	43%
35	35%	29	24%	32	25%
10	10%	12	10%	10	8%
1	1%	1	1%	1	1%

B4 When was this dwelling built (approximately)?

- 1) Pre 1900
- 2) 1901-1930
- 3) 1931-1950
- 4) 1951-1970
- 5) 1971-1980
- 6) 1981-1990
- 7) 1991+

2010		2002		1995	
21	21%	28	24%	34	27%
8	8%	9	8%	12	9%
6	6%	11	9%	8	6%
13	13%	18	15%	16	13%
21	21%	24	20%	28	22%
19	19%	22	18%	25	20%
12	12%	7	6%	3	2%

B5 How many people from your household have left the village in the last 5 years?

B6 How many left because of lack of suitable employment in or near the village?

B7 How many left because of a lack of suitable housing in the village?

B8 If given the chance how many do you think would like to return?

2010	2002	1995
23	14	50
5	3	11
9	3	7
7	4	14

B9 Type of dwelling

- 1) Private rented
- 2) District Council rented
- 3) Owner occupied
- 4) Shared equity
- 5) Tied by virtue of employment
- 6) Other (please specify)

2010		2002		1995	
4	4%	5	4%	9	7%
4	4%	12	10%	14	11%
87	89%	97	82%	102	78%
0	0%	0	0%	0	0%
2	2%	4	3%	4	3%
1	1%	1	1%	1	1%

EDUCATION**D1 If any of your children are unable to take part in after school activities, please give the reasons why:**

- 1) No school age children or Not a problem
- 2) No public transport available
- 3) Distance between home and school
- 4) Road safety hazards
- 5) Other (please specify)

2010	2002	1995
92	108	103
3	5	10
2	4	8
2	1	7
1	1	1

TRANSPORT AND HIGHWAYS**J1 How many motorised vehicles are there in your household (including cars, lorries, vans and motor cycles)?**

Vehicles as a percentage of population entitled to drive

2010	2002	1995
215	220	231
102%	94%	89%

J2 How many parking spaces does this dwelling have? (including garaged and off-road spaces)

2010	2002	1995
405	409	549

The large parking space figure for 1995 is distorted by some very large numbers reported by the farms during the last appraisal.

END OF PART 1

PART 2 PERSONAL

In this section the results for each member of the household over 11 years of age have been totalled for each question.

PEOPLE

A3 Where did you spend your childhood?

- 1) In this village
- 2) Outside the village but within 10 miles
- 3) Within 11-30 miles
- 4) Over 30 miles away

2010		2002		1995	
30	13%	26	11%	47	17%
49	21%	73	31%	59	21%
28	12%	32	14%	25	9%
106	45%	103	44%	145	53%

HOUSING

B1 What do you think about the number of houses that have been built in the village over the last 10 years?

- 1) About right
- 2) Too much new housing
- 3) Too little new housing
- 4) No opinion

2010		2002		1995	
160	68%	160	68%	149	55%
6	3%	20	9%	45	16%
18	8%	24	10%	30	11%
31	13%	30	13%	49	18%

B2 Do you wish to move from this dwelling within the next 5 years? If so, where to?

- 1) I don't wish to move
- 2) Move elsewhere in the village
- 3) Move within 10 miles of this village
- 4) Move over 10 miles away
- 5) I wish to move but have no preferences

2010		2002		1995	
153	65%	196	84%	189	71%
11	5%	9	4%	3	1%
21	9%	9	4%	15	6%
13	6%	13	6%	38	14%
13	6%	7	3%	22	8%

B3 What kind of housing do you think the village needs?

- 1) No housing is needed
- 2) Housing for young people¹
- 3) Large family housing
- 4) Housing for the elderly
- 5) Housing for local people
- 6) Housing for low income families
- 7) No opinion

2010		2002		1995	
88	38%	113	48%	126	47%
37	16%	42	18%	50	19%
18	8%	17	7%	21	8%
19	8%	31	13%	22	8%
54	23%	46	20%	39	15%
9	4%	16	7%	19	7%
29	12%	30	13%	55	21%

B4 Within the village do you think there is sufficient accommodation for senior citizens?

- 1) Yes²
- 2) No
- 3) No Opinion

2010		2002		1995	
111	53%	105	45%	124	46%
30	14%	49	21%	50	19%
69	33%	80	34%	94	35%

¹ B3 One household suggested that affordable housing was needed

² B4 One household pointed out that more accommodation for the elderly would need additional amenities and support within the village

B5 What type of housing development would be acceptable to you in the village?

	2010		2002		1995	
1) None	47	20%	72	31%	71	26%
2) Single dwellings in controlled locations	75	32%	51	22%	47	18%
3) Small group(s) of less than 10 houses	48	21%	48	21%	41	15%
4) Within agreed infill areas only	85	36%	53	23%	50	19%
5) Conversion of redundant buildings	79	34%	85	36%	78	29%
6) Larger groups, greater than 10 houses	3	1%	11	5%	10	4%

B6 If there were to be expansion, where should it be?

	2010	
Raunds Road, adjacent to Sawyers Crescent up to Meadowcroft	12	12%
Raunds Road on the right leaving the Village and round to B645	3	3%
Carrs field - end of Duchy Close	8	8%
Re-development of JST Forklift site	6	6%
Re-use and extension of airfield housing annexe	4	4%
Carr Transport site in Caldecott	2	2%
Field opposite Village Hall (Caldecott Road)	1	1%
No expansion of airfield housing as this will swamp village	1	1%
In-fill only please	1	1%

B7 Chelveston is a small, relatively quiet village away from main population centres. How would you like to see this change, if at all?

	2010		2002		1995	
1) Not at all	88	42%	91	39%	63	23%
2) No opinion	10	5%	4	2%	10	4%
3) Better amenities ^{3,4,5} but no expansion	32	15%	42	18%	103	38%
4) Better amenities but limited expansion ⁶	77	36%	80	34%	77	28%
5) Better amenities, significant expansion	3	1%	11	5%	16	7%
6) Other views (please specify below) ⁷	1	0%	4	2%	1	0%

EMPLOYMENT**C1 Are you at present:**

	2010		2002		1995	
1) Employee	81	35%	95	41%	113	42%
2) Self-employed or run a business	33	14%	46	20%	44	16%
3) Unemployed	2	1%	2	1%	3	1%
4) In a government training scheme	0	0%	0	0%	4	1%
5) In full-time education	26	11%	26	11%	26	10%
6) Wholly retired	54	23%	35	15%	47	17%
7) Un-waged housewife/husband	9	4%	23	10%	26	10%
8) Permanently sick/disabled	6	3%	4	2%	7	2%
9) Other (e.g voluntary work - please state) ⁸	3	1%	2	1%	2	1%

³ B7 Two households suggested a need for a play area/field – perhaps with a skateboard ramp.

⁴ B7 Three households suggested a shop, perhaps at the pub

⁵ B7 Two households were looking for an improved bus service

⁶ B7 One household suggested a small expansion of perhaps 20 houses a year.

⁷ B7 One household wanted a twice yearly skip to help with brook cleaning

⁸ C1 Magistrate, charity trustee, looking after grandchildren

C2 If you earn a wage what is your main occupation?

- 1) Farming, Agriculture
- 2) Sales, Marketing, Retail
- 3) Manufacturing, Engineering
- 4) Construction, Repairs
- 5) Hotels, Catering, Leisure
- 6) Transport, Communications, Distribution
- 7) Education
- 8) Health and Welfare Services
- 9) Other (please specify below)⁹

2010		2002		1995	
2	2%	12	9%	13	8%
22	19%	28	20%	39	23%
17	15%	26	19%	24	15%
11	10%	14	10%	14	8%
8	7%	0	0%	11	7%
5	4%	15	11%	10	6%
10	9%	15	11%	15	9%
9	8%	13	9%	12	7%
14	12%	18	13%	28	17%

C3 Where is your main place of work or study?

- 1) At home or in this village
- 2) Outside the village but within 10 miles
- 3) Within 11-30 miles
- 4) Over 30 miles away

2010		2002		1995	
116	50%	109	48%	59	26%
46	20%	53	23%	81	36%
44	19%	43	19%	60	26%
25	11%	25	11%	27	12%

EDUCATION**D1 Do you attend adult education or evening classes?**

- 1) Yes
- 2) No

2010		2002		1995	
11	5%	21	9%	35	13%
191	95%	213	91%	226	87%

LOCAL COUNTRYSIDE AND ENVIRONMENT**E1 Do you know where most of the public footpaths and bridleways are in the village?**

- 1) Yes
- 2) No

2010		2002		1995	
155	74%	154	66%	177	63%
55	26%	80	34%	93	37%

E2 How often do you use the public footpaths and bridleways of the village?

- 1) Daily
- 2) Weekly
- 3) Monthly
- 4) About twice a year
- 5) About once a year
- 6) Never

2010		2002		1995	
26	12%	28	12%	41	15%
60	28%	56	24%	47	18%
60	28%	33	14%	39	15%
23	11%	38	16%	43	16%
11	5%	11	5%	30	11%
32	15%	66	28%	67	25%

⁹ C2 Four residents reported working in IT, Four in financial services, Two in service companies, One in healthcare chaplaincy, One in community care, One secretarial

E3 If never, what are the difficulties?

- 1) Farm Animals
- 2) No stiles or gates
- 3) Barbed wire
- 4) Mud or water
- 5) Crops in fields
- 6) Bushes or nettles
- 7) No signposts
- 8) Other (please specify below)¹⁰

	2010		2002		1995	
1) Farm Animals	3	4%	4	4%	7	3%
2) No stiles or gates	5	7%	8	8%	20	10%
3) Barbed wire	0	0%	6	6%	7	3%
4) Mud or water	16	23%	9	9%	16	8%
5) Crops in fields	12	17%	27	28%	59	29%
6) Bushes or nettles	6	9%	13	13%	34	17%
7) No signposts	12	17%	21	21%	34	17%
8) Other (please specify below) ¹⁰	15	22%	10	10%	25	13%

HEALTH AND SOCIAL SERVICES

F1 Do you have any difficulty in getting to the following?	2010			2002			1995		
	Often	Some times	Never	Often	Some times	Never	Often	Some times	Never
1) Hospital	0	9	205	9	19	206	12	30	215
2) Doctor	0	11	203	11	16	207	12	31	216
3) Chemist	0	4	210	8	17	209	8	26	217
4) Chiropodist	0	0	0	3	1	230	5	9	213
5) Optician	0	0	0	6	6	222	6	18	220
6) Dentist	0	0	0	11	9	214	8	21	219
7) Other medical facility	0	0	0	5	3	224	6	15	206

F2 Have any of the following visited you in the village in the last 5 years?	2010			2002			1995		
	Often	Some times	Never	Often	Some times	Never	Often	Some times	Never
1) Doctor	0	16	198	5	26	203	3	64	194
2) District nurse	0	1	213	2	16	216	2	12	232
3) Health visitor	2	2	210	1	15	218	2	16	229
4) Home help	3	8	203	4	1	229	3	1	240
5) Ambulance	0	0	214	3	16	215	1	16	231
6) Maternity care	0	0	0	1	9	224	4	6	232
7) Chiropody	0	0	0	4	2	228	2	13	230
8) Loan of medical equipment	0	0	0	0	8	226	0	7	237
9) Meals on wheels	0	0	0	0	1	233	0	2	241

F3 How often would you be prepared to become involved in a good neighbour scheme (e.g. transport for appointments)?

	2010		2002		1995	
1) Once a week	3	2%	20	9%	13	5%
2) Once a month	27	14%	14	6%	15	6%
3) Occasionally	100	50%	111	47%	108	41%
4) Never ¹¹	69	35%	89	38%	126	48%

¹⁰ **E3 Reasons for not using paths:** Unknown routes. Negotiation of busy road to get to them. The stiles should have wooden access for dogs, as the paths are used mainly for people with dogs, therefore they can't use these paths. Not really sure where they are and find the map on the web difficult to read. Laziness. Not publicised. Lack of mobility. Simply not clear where the correct route is. Don't walk much. Public footpaths are fine - require one to Higham Ferrers Local Map would be helpful Lack of signposts during walk and laziness.

¹¹ **F3** This doesn't need organising as most people already do it for their neighbours if needed.

EMERGENCY, ENVIRONMENT AND OTHER SERVICES

G1 Do you regard the police coverage of this village to be

	2010		2002		1995	
1) Good	0	0%	5	2%	3	1%
2) Reasonable	60	29%	47	20%	74	28%
3) Poor	107	52%	145	62%	160	60%
4) No opinion	38	19%	37	16%	30	11%

G2 What is your opinion of the following services in the village?

	2010				2002			
	Good	OK	Poor	No View	Good	OK	Poor	No View
1) Road maintenance	4%	43%	51%	3%	14%	67%	19%	0%
2) Road cleaning	13%	58%	25%	5%	18%	63%	16%	3%
3) Litter picking	25%	51%	17%	7%	21%	54%	21%	4%
4) Hedge maintenance ¹²	26%	56%	14%	4%	29%	51%	18%	2%
5) Verge grass cutting ¹³	37%	52%	8%	3%				
6) Refuse collection	77%	18%	2%	2%	69%	27%	3%	1%
7) Street lighting ¹⁴	47%	35%	16%	2%	22%	57%	21%	0%
8) The provision of litter bins	34%	44%	12%	11%	27%	37%	28%	8%
9) The provision of dog bins	26%	40%	15%	19%				

G3 Would you be prepared to keep certain items separate from your refuse for recycling if a separate collection was made?

	2010		2002		1995	
1) Yes	185	90%	211	90%	243	91%
2) No	20	10%	23	10%	24	9%

RETAIL SERVICES AND OTHER FACILITIES

H1 Do you use the following facilities?

	2010			2002			1995		
	Often	Some times	Never	Often	Some times	Never	Often	Some times	Never
1) Village Hall	11%	65%	24%	5%	59%	36%	11%	69%	20%
2) Star & Garter ¹⁵	18%	63%	19%	19%	50%	31%	11%	55%	34%
3) Women's Institute	5%	8%	88%	2%	7%	91%	3%	11%	85%
4) Telephone Kiosk				1%	10%	89%	2%	21%	77%
5) Mums and Toddlers				2%	2%	96%	4%	2%	95%
6) Social Club ¹⁶							7%	11%	82%
7) Mobile library							0%	3%	97%

H2 Do you need help in getting to nearby shops

	2010		2002		1995	
1) Yes	9	4%	13	6%	25	9%
2) No	200	92%	221	94%	242	91%

¹² G2 Hedgerow maintenance too vigorous and at wrong time of year

¹³ G2 I have to say that the contractors who had the grass cutting contract last year were "shocking

¹⁴ G2 Too much street lighting!

¹⁵ H1 Didn't use the Star and Garter until the new landlady arrived

¹⁶ H1 Three residents mentioned the "Free Spirits" group and Two the Church as being important amenities.

H3 If a community shop was set up would you use it?

- 1) Often
- 2) Occasionally¹⁷
- 3) Never

2010		2002		1995	
94	45%	95	41%	118	44%
112	54%	128	55%	139	52%
2	1%	11	5%	11	4%

SPORT, SOCIAL AND ENTERTAINMENT

I1 Do you use any of the following facilities outside the village?	2010			2002			1995		
	Often	Some times	Never	Often	Some times	Never	Often	Some times	Never
1) Luncheon Club	0%	1%	99%	1%	3%	97%	1%	4%	94%
2) Social Club for over 60's	0%	3%	97%	0%	3%	97%	1%	1%	97%
3) Day Centre	0%	0%	100%	0%	0%	100%	0%	1%	99%
4) Evening Classes	2%	7%	91%	3%	7%	90%	8%	15%	77%
5) Youth Club	2%	3%	95%	0%	0%	100%	1%	2%	97%
6) Sports Clubs or Centres	16%	14%	70%	17%	15%	68%	19%	22%	59%
7) Children's Play Areas	2%	11%	87%	6%	23%	71%	5%	6%	90%
8) Youth Activities (e.g. Cubs/Brownies)	3%	2%	94%	8%	4%	88%	2%	2%	96%

I2 How many times a year do you use the village hall?

- 1) More than 10
- 2) Between 6 and 10
- 3) Between 1 and 5
- 4) Less frequently
- 5) Never

2010		2002		1995	
21	10%	12	5%	26	10%
21	10%	15	6%	23	9%
82	39%	95	41%	122	46%
41	20%	41	18%	60	22%
45	21%	71	30%	35	13%

I3 Do you think the village hall is adequate for the needs of the village?

- 1) Yes
- 2) No¹⁸
- 3) No opinion

2010		2002		1995	
159	76%	143	61%	169	63%
12	6%	45	19%	40	16%
39	19%	46	20%	57	21%

TRANSPORT AND HIGHWAYS**J1 If you have day-time access to a vehicle, what do you use it for:**

- 1) Business journeys
- 2) Transport to work
- 3) Transporting children to school/college
- 4) Leisure
- 5) Shopping

2010		2002		1995	
47	22%	85	43%	102	47%
100	48%	117	59%	135	62%
34	16%	44	22%	48	22%
181	86%	161	81%	195	89%
185	88%	166	84%	196	90%

¹⁷ **H3** Depends on stock levels etc, we would like to use a local shop and support shops in Higham Raunds and Kimbolton

¹⁸ **I3** Too small, kitchen not in a good position for serving etc. Outdated toilet and kitchen facilities. Better kitchen facilities could lead to more bookings. We need a new kitchen. Parking is a nightmare and space too small. Kitchen & toilets need improvement access limited for disabled. Improved kitchen.

J2 If you are responsible for the vehicle, when not in use where do you usually park it?

	2010		2002		1995	
1) In a garage	49	26%	69	35%	97	44%
2) Off the road	122	65%	100	51%	96	44%
3) On the road	17	9%	29	15%	25	12%

J3 How many times a month do you use the school bus service?

	2010		2002		1995	
1) More than 20	7	3%	8	3%	10	4%
2) Between 11 and 20	1	0%	1	0%	4	2%
3) Between 5 and 10	0	0%	1	0%	2	1%
4) Less than 5	0	0%	0	0%	6	3%
5) Never	196	96%	224	96%	238	90%

J4 What are your views on the state of pavement repair in the village?

	2010		2002		1995	
1) Good	11	5%	10	4%	16	6%
2) Reasonable	102	50%	138	59%	146	54%
3) Poor	71	34%	55	24%	81	30%
4) No opinion	22	11%	31	13%	25	10%

J5 Does the village need more pavements?

	2010		2002		1995	
1) Yes ¹⁹	107	52%	82	35%	109	41%
2) No	77	37%	97	41%	94	35%
3) No opinion	23	11%	55	24%	63	24%

J6 Do you think there are any major 'danger-spots' on the roads in the village?

	2010		2002		1995	
1) Yes	137	67%	161	68%	179	69%
2) No	51	25%	46	19%	44	17%
3) No opinion	17	8%	29	12%	37	14%

J6 Where are these danger spots?

	2010	
Pulling out of top of Water Lane - cars come too fast around corner and cars parked opposite cause road to narrow; Corner by Cornerhouse Cottages is very dangerous; Coming from Raunds on the right hand corner where it meets the B645; due to cars parking on the corner.	23	23%
Disbrowe Court entrance by the pub is a difficult turn; Bends by the pub;	15	15%
Leaving Water Lane onto B645 at both ends	14	14%
When traffic comes in from Raunds on the Raunds Road a majority of people break the speed limit and more than a few come at dangerous speeds; Traffic could be slowed down on the Raunds Road by Chicanes between Pretoria Cottages and Pokas Cottages	12	12%
Outside JST when they are unloading the articulated lorry	8	8%
Bends through Caldecott	8	8%
Speed of traffic on the Water Lane "rat run"	7	7%
Speed of traffic on Higham Hill	4	4%

¹⁹ **J5** 21 residents want to see the circular path from the end of Water Lane to Bidwell to be completed and 8 residents wanted to see a "loop" from the Village Hall to the end of Water Lane (ford end). 12 residents wanted to see a path to Higham Ferrers and 7 a path to Raunds. 2 residents wanted additional footpaths along Water Lane.

J7 Would you like to see more traffic speed restrictions introduced in the village?

	2010		2002		1995	
1) Yes	119	56%	146	62%	146	55%
2) No	76	36%	67	29%	73	28%
3) No opinion	17	8%	21	9%	46	17%

J7 Where should they be?

	2010	
Speed restrictions needed on Raunds Road	24	23%
Water Lane	16	15%
Higham Road	13	12%
Caldecott/Caldecott Road	7	7%
Bends by the Star and Garter	5	5%
Kimbolton Road	5	5%

J8 Would you like to see more street lighting in the village?

	2010		2002		1995	
1) Yes	65	31%	79	34%	145	55%
2) No	95	46%	92	39%	69	26%
3) No opinion	48	23%	63	27%	51	19%

J8 Where should it be sited?

	2010	
Water Lane	7	7%
Raunds Road	6	6%
Higham Road	5	5%
Kimbolton Road – near layby	4	4%
Hillside near garages and along footpath to Duchy Close	2	2%

J9 Are facilities for pedestrians and cyclists in the village

	2010		2002		1995	
1) Good	21	10%	12	5%	12	5%
2) Reasonable	115	55%	141	60%	142	54%
3) Poor	58	28%	54	23%	92	34%
4) No opinion	15	7%	27	12%	19	7%

J10 Does the present level of Heavy Goods Vehicle traffic through the village represent a noise/environmental hazard to the village?

	2010		2002		1995	
1) Yes ²⁰	85	41%	86	37%	145	55%
2) No	104	50%	112	48%	88	33%
3) No opinion	18	9%	36	15%	33	12%

J11 Would you accept a significant increase in locally based Heavy Goods Vehicle traffic?

	2010		2002		1995	
1) Yes	10	5%	11	5%	21	8%
2) No ²¹	185	89%	209	89%	225	85%
3) No opinion	13	6%	14	6%	19	7%

INFORMATION AND COMMUNICATION

²⁰ **J10** We now have double decker school buses using the Raunds Road violating the 7.5 tonne limit; and there is still a problem with load motorcycle traffic.

²¹ **J11** A village is a village not for heavy goods traffic, what do you think Hargrave would say to heavy goods traffic.

K1 Do you think the amount of information available about what's going on in the village is:

- 1) Good
- 2) Reasonable
- 3) Poor
- 4) No opinion

2010		2002		1995	
127	60%	78	33%	53	20%
72	34%	118	50%	129	48%
8	4%	30	13%	67	25%
3	1%	8	3%	18	7%

K2 How many times a month do you look at a village notice board?

- 1) More than 10
- 2) Between 5 and 10
- 3) Less than 5
- 4) Never

2010		2002		1995	
22	11%	21	9%	31	12%
59	29%	74	32%	71	26%
97	47%	94	40%	108	40%
29	14%	45	19%	58	22%

K3 Do you read the bi-monthly village newsletter?

- 1) Yes
- 2) Occasionally
- 3) Never

2010	
179	86%
18	9%
11	5%

K4 How many times a month do you look at the Parish Council main website?

- 1) More than 10
- 2) Between 5 and 10
- 3) Less than 5
- 4) Never

2010	
6	3%
15	7%
74	36%
111	54%

K5 How many times a month do you look at the Parish Council history website?

- 1) More than 10
- 2) Between 5 and 10
- 3) Less than 5
- 4) Never

2010	
5	2%
7	3%
76	37%
118	57%

RELIGION**L1 Do you attend a place of worship**

- 1) Often
- 2) Occasionally
- 3) Never

2010		2002		1995	
16	8%	15	6%	23	9%
75	36%	79	34%	113	42%
118	56%	140	60%	130	49%

L2 Is the village church important to you

- 1) For Sunday worship
- 2) For baptisms, weddings and funerals
- 3) As an historic building
- 4) Every village should have one
- 5) As a community facility
- 6) Other (please specify below)^{22,23}

2010		2002		1995	
41	20%	34	15%	56	21%
112	54%	97	42%	114	43%
153	73%	132	57%	172	65%
100	48%	110	47%	130	49%
109	52%	89	38%	96	36%
2	1%	1	0%	7	3%

L3 Would you like to see the role of the church in the village changed or extended e.g. Sunday school, family services?

- 1) Yes²⁴
- 2) No
- 3) No opinion

2010		2002		1995	
27	13%	36	15%	55	21%
21	10%	53	23%	38	15%
157	77%	145	62%	165	64%

LOCAL GOVERNMENT**M1 Would you be prepared to pay a slightly higher Council Tax to meet some of the needs of the village?**

- 1) Yes
- 2) No
- 3) No opinion

2010		2002		1995	
74	35%	106	45%	96	37%
105	50%	100	43%	132	50%
31	15%	28	12%	35	13%

M2 Do you think more money should be spent, or less, or about the same as at present on:

- 1) Planting trees and bulbs
- 2) Footpaths
- 3) Traffic calming
- 4) Street Lighting
- 5) Litter/Dog bins
- 6) Provision of allotments
- 7) Provision of play area
- 8) Other works (please specify)²⁵

	2002				2002			
	More	Same	Less	No View	More	Same	Less	No View
1) Planting trees and bulbs	23%	59%	5%	13%	21%	63%	5%	11%
2) Footpaths	47%	46%	1%	6%	45%	38%	5%	12%
3) Traffic calming	47%	36%	9%	8%	60%	25%	5%	10%
4) Street Lighting	21%	60%	8%	10%				
5) Litter/Dog bins	12%	62%	8%	19%	23%	61%	6%	11%
6) Provision of allotments	27%	41%	8%	24%				
7) Provision of play area	27%	26%	5%	42%				
8) Other works (please specify) ²⁵	4%	1%	0%	95%				

²² **L2** The village church, as a symbol of God's presence in the middle of his people is very important, a place where life's cycle can be celebrated and remembered. However as a female priest I no longer feel welcome and therefore minister and worship outside the Parish. I used to regularly pop into the church when walking and am saddened that the church is now sometimes locked.

²³ **L2** Possible refuge in times of need.

²⁴ **L3** Midnight mass at Christmas and more evening services; Possible occasional family service; Family service at Christmas; Driven by the needs of the community; More village people to support it financially and attendance; Evensong occasionally; Sunday school; Not just associated with the Church at Higham Ferrers; Monthly service with later start!; Up to the parents; The Vicar to integrate with the community outside the regular church functions, then church attendance would increase; By allowing women priests to exercise full ministry

²⁵ **M2** Village Shop; Parking at Village Hall; More Footpaths/Cycle paths; Cycle track; Play area vital; Pruning of big trees and shrubs in Foot Lane; An emergency plan for the village; Didn't know there were allotments!

M3 Is sufficient publicity is given to planning applications affecting the village?

- 1) Yes
- 2) No
- 3) No opinion

2010		2002		1995	
130	63%	87	37%	36	14%
54	26%	99	42%	195	74%
23	11%	48	21%	33	12%

GENERAL**N1 How did you come to live in this village?**

- 1) Born in village
- 2) Work in area
- 3) Relatives near by
- 4) Love of village life
- 5) Love of country life
- 6) Availability of housing
- 7) Retired to parish
- 8) Marriage
- 9) Came with family
- 10) Other²⁶

2010		2002		1995	
22	11%	15	6%	25	9%
59	29%	65	28%	87	33%
34	16%	47	20%	45	17%
74	36%	89	38%	90	34%
102	49%	78	34%	121	45%
46	22%	34	15%	79	30%
8	4%	7	3%	10	4%
15	7%	23	10%	17	6%
28	14%	31	13%	57	21%
17	8%	3	1%	14	5%

WASTE MANAGEMENT SERVICE**O1 Do you support the weekly collection of food waste (vegetable peelings, leftovers and other similar waste)? A small lidded container (about the size of a toaster) would be supplied for use in your kitchen and a larger one for storage outside.**

- 1) Yes
- 2) No²⁷
- 3) No opinion

2010	
110	53%
73	35%
23	11%

O2 Do you support the use of larger containers (e.g. such as "wheelie bins", lidded or open boxes) so as to allow non-food waste to be collected fortnightly?

- 1) Yes
- 2) No²⁸
- 3) No opinion

2010	
92	45%
102	50%
12	6%

O3 Do you support the principle of diverting more waste from landfill (e.g. by recycling, composting or use in alternate energy processes)?

- 1) Yes
- 2) No
- 3) No opinion

2010	
176	85%
16	8%
14	7%

O4 Should more waste management resources be targeted at litter and street cleaning (remembering that all services have a cost)?

- 1) Litter collection
- 2) Street cleaning

2010			
More	Same	Less	No Opinion
17%	67%	0%	16%
1%	61%	1%	38%

²⁶ **N1** Attend village church; Peace and quiet; Unusual project

²⁷ **O1** Should be taken to the allotment compost bins

²⁸ **O2** Not if the containers are open topped (3 comments)

ADDITIONAL COMMENTS

- This village has the potential to be a really nice place, it is so important for people to start looking out for each other especially the older generation. I have dog myself and when I walk I feel the need to pick up other peoples' dog mess as it is all over the village. Hence more dog bins are obviously needed. Obviously small villages don't have regular policing but very often almost every night there are cars in the lay by playing loud music and leaving needles behind. Something has to be done about them, there are glass bottles, cans, bags and KFC boxes all over the place. The car nearly knocked me over in the lay-by. Sorry for going on - Thank you
- Produce an information guide to Village facilities including footpaths. Show contact numbers and names for local main services e.g. GP practices, hospitals, schools, churches and village hall etc, local trades people. Provide a typical calendar of events that may appeal including those from nearby villages, farmers market days. Provide contact point for local information on the village including web site(s). Contact other village "JCMs" to find out what "best practice" ideas/costs they have introduced or have planned. Produce a scheme that would benefit the village and seek lottery funds to help implement it in 2011.
- Should any work on the logo be required. i.e clothing, signage, banners, advertising material, please let me know, I am in the business
- Opinion that traffic calming is required in Raunds Road. Speeds reached regularly exceed 30mph by a long way. Parish Council should very carefully consider planning applications for garden developments due to impact on village. Concerns of mixed welcome for "incomers" to the Village.
- We may move if the Biomass appears or wind farming
- There is no access for dogs on some footpaths to go over stiles etc. My dog is too heavy for me to lift over, and some farmers drill their crops right up to a hedge although there is a footpath. Apart from this I am happy with the Village.
- Thanks must go to the Parish Councillors for their dedication and hard work for the good of the village/villagers - thank you
- Since moving here we have not found the village particularly welcoming it would seem that unless you are Chelveston "born and bred" your opinion is unwelcome. We moved here because we wanted to be part of a village community, however if we could move again we certainly would. The pub does not welcome strangers and is more a drinkers pub than the friendly local we imagined it to be. The allotment approval process was biased and residents who did not adopt the consensus view were excluded and not informed of further decision making meetings. Cllr Adrian Dale did not respond to emails and was blasé about concerns and ignored our issues and offered us reassurance while not informing us of changes made to the initial proposals for allotments. On the whole Chelveston is a lovely village but it is insular and unwelcoming to new residents, we feel reluctant to go out walking in the village and apart from our direct neighbours know few people. We did try to embrace village life and get to know people but have now given up - we will leave as soon as we can.
- I have been making the comments for a home for adults with learning difficulties in the village. They are very happy and settled in the village and all of their families say what a lovely place this is to live and work.
- I would like to see the metal fences in Caldecott that have been damaged by motor vehicles repaired. The damaged fences are a blot on the landscape and indicate a population that is not interested in the appearance of its environment.
- It is a good village with a vibrant community, we like it. The roads need sorting a bit as the potholes have been there for some time. We find the street lamps really intrusive and they need to shield the houses whilst lighting the paths. The logo suggestion is without computer and therefore could be adjusted so that the church is clearer in colour. Essentially it is rural. The words could go round the bottom half circle or in a block underneath. No other parish has a logo like this!

- No no no windfarms anywhere or bio what's it. This village is great as it is and I came from a small village that was extended with new houses some years ago. It was the end of a quiet village for ever, let's not let it happen here (you can't go back). Some people like myself just want to live in a quiet village THANK YOU
- Refuse Collections - our current facilities are not practical or sufficient. (1) Collection lorries have lifting equipment so could collect wheelie bins (health and safety for households and workers) instead of black plastic bags. (2) Open top boxes for recycled waste are not practical or sufficient (need to be kept inside or fill with rain water) (3) Over 50% of my waste is for the green box - my household has only one person and so can fill a green box weekly easily! So a family will have much more. (4) every adjacent council use wheelie bins for general waste and recycling Why is ENC not collecting like every other council in the country?
- Bus!!
- Would be nice to see a bus service, if only a few times a week!
- Stop parking on pavements and in dangerous places particularly lower part of Sawyers Crescent
- I found by accident that a village bus calls Wed/Fri - why isn't this publicised (on notice boards or through the newsletter). Expansion is housing cannot take place until public transport (daily) is provided. Why can't the service that calls Raunds/Stanwick/Rushden throughout the day call Raunds/Chelveston/Rushden a couple of times a day?
- Well done to the man I often see litter picking - Thank you brilliant job
- I don't think that there are good enough emergency plans set in place for the village and if there are then they should be explained to people so that we all know what to do in the event of a fire which wipes out most of the village, or a terrorist attack etc. At the moment I believe that these things would cause widespread panic which could be our downfall. Also I believe it is important to expand the village and therefore believe that Duchy Field should be used for housing.
- We would like to give praise to the dedicated members of the Parish Council who give up their free time to look after the village and the well being of its inhabitants. For a small village we are really well looked after. Well done with the allotments - there is going to be alot of fun up there and this will bring a sense of community spirit.
- In the event of safety, I believe the footpath should be extended at least from the top of school hill to Water Lane but preferably to Bidwell and to extend the footpath that runs to Higham Ferrers to halfway to Chelveston to enable people to walk in safety instead of having to step on the grass verge out of the way of fast moving oncoming traffic. They have footpaths on either side of the road in towns, why can't we have just one. After all we pay more council tax in the village that what they do in the towns. Ultimately, provide a cycle path to Higham Ferrers
- One of us lives away during the week because of lack of work - didn't know there was a web site!